

Results of Childcare statistics 2010 feedback questionnaire

Publication code : IM-11-12-003

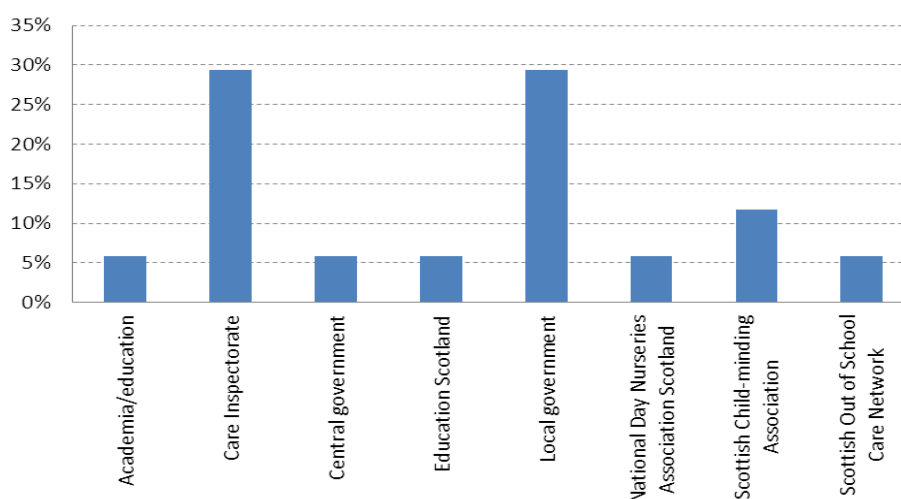
Publication date	7 November 2012
Version number	1
Author's initials	LM
Job title	Information Analyst
Responsibility for this document	Policy and Research Officer

A survey of users of the childcare statistics produced by the Care Inspectorate in 2011 was carried out in April 2012. The online survey was advertised on the Care Inspectorate website and circulated to a list of known users, including those registered on ScotStat as having an interest in children and young people statistics. Respondents were invited to express their satisfaction or otherwise with the presentation, timing and content of Childcare Statistics 2010.

Results of the survey, which have been used to inform the planning of our Childcare Statistics 2011 are laid out in the following pages.

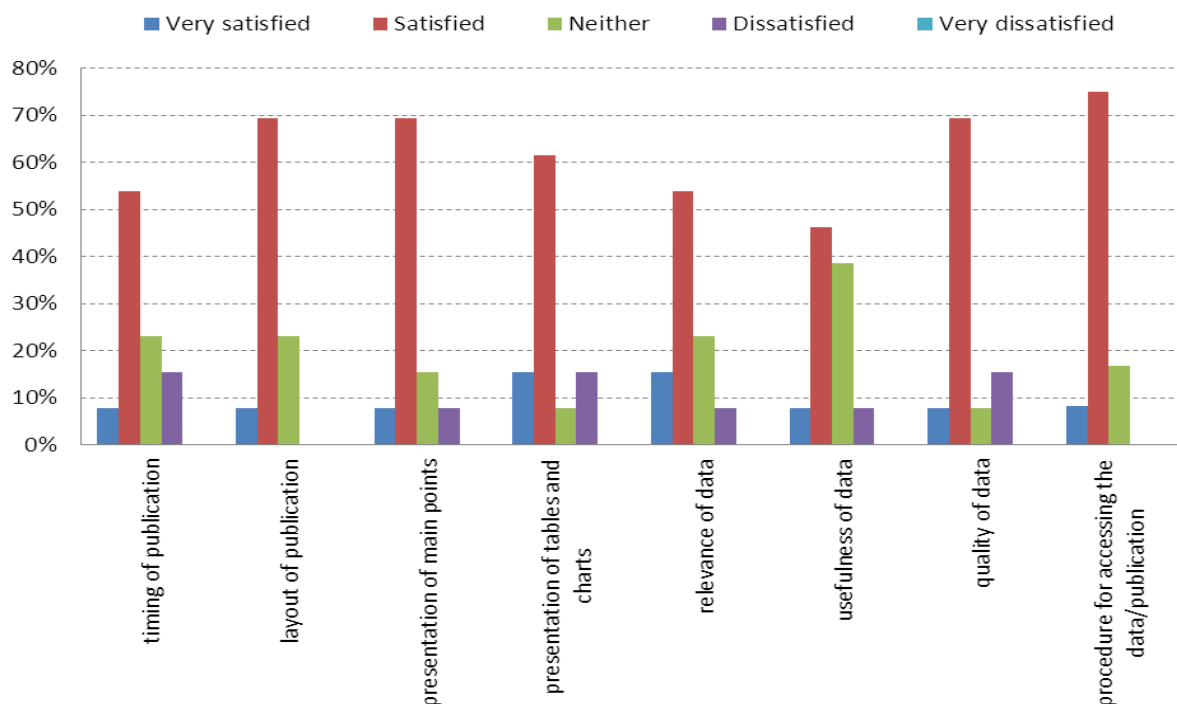
1. There were **17** respondents in total, from the following areas:

Chart 1: percentage distribution of respondents by area of work



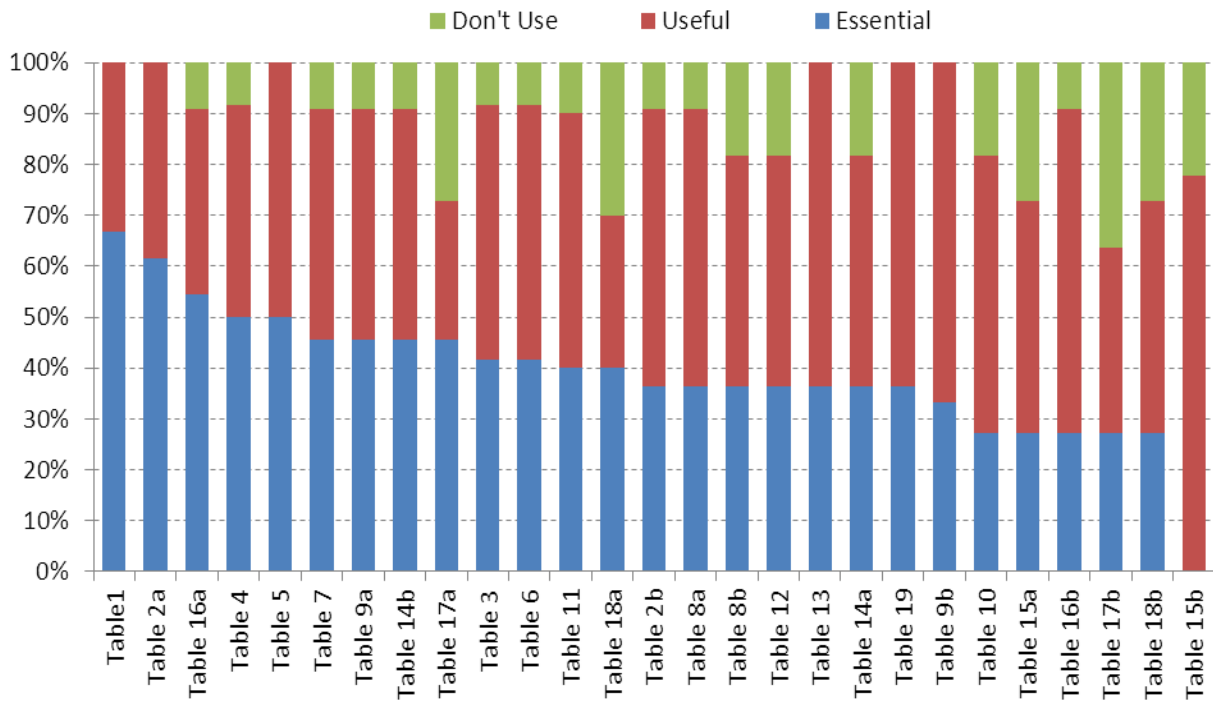
2. 95% of respondents used the Statistics for job related purposes and the other 18% used them for studying/learning.
3. Respondents were asked how satisfied they were with the 2010 Childcare statistics in terms of timing and layout of publication; presentation of headline statistics, main points, tables and charts; and the relevance, usefulness and quality of the data. Their responses are charted below.

Chart 2: percentage distribution of respondents' level of satisfaction in various aspects of the publication



4. In response to the question “Are there any key gaps in the type of childcare statistics that are collected?”, one third of respondents said ‘Yes’, another third said ‘No’ and the rest said ‘Don’t Know’.
5. In response to the question “Are there any key gaps in the analysis provided in the 2010 Childcare Statistics publication?”, 17% of respondents said ‘Yes’, 58% said ‘No’ and a quarter said ‘Don’t Know’.
6. In response to the question “Have you ever requested ad-hoc analysis of Childcare Statistics before?”, 17% of respondents said ‘Yes’ and the rest said ‘No’.
7. Respondents were asked to rate the value of each table published within the 2010 Childcare Statistics. Their responses are charted below (the full table names are listed in Appendix A).

Chart 3. Percentage distribution of respondents' opinion on the usefulness of the tables published within 2010 Childcare Statistics (sorted by the % of respondents who opted for 'Essential').



8. Respondents were asked if the release of a background dataset alongside the 2011 Childcare Statistics publication, that can be manipulated locally, would be of use to them. 80% answered "Yes", 10% answered "No" and the remaining 10% said they didn't know.

9. Lastly, respondents were given the opportunity to give comments. The comments given are summarised below.
- The data is relevant and useful but not current enough - it would be more relevant if the publication date was brought forward.
 - The data is not always accurate.
 - The report could be clearer with larger text in parts.
 - It would be useful to have more contextual commentary to accompany the figures, this may avoid misinterpretation.
 - An executive summary document would be better than a 'main findings' section.
 - A useful addition would be to provide breakdowns by management sector, age of child, and pre-school education services (including childminders). More data relating to services which are not stand-alone (i.e. nurseries attached to primary schools, out of school care attached to other services, etc), including breakdowns by place and age. It would also be useful to include data on workforce qualifications, as well as statistics showing the churn in provision.
 - The Additional tables (1-6) should be included in the full report to provide an overview of the contribution of private and voluntary provision, alongside local authorities. Some respondents were unaware that private, public and voluntary sector figures are available.
 - Tables 6-12 are the least useful and seem to duplicate, however the Urban/rural stats are very useful.
 - Background datasets would be useful for specific projects and local planning of service provision.

In addition to the feedback questionnaire a meeting was held on the 13th February 2012 with Scottish Government colleagues to review the 2010 Childcare Statistics publication and to discuss the forthcoming publication and 2012 Annual Returns consultation. The main points to bare in mind for the 2011 Childcare Statistics publication are as follows:

- More indepth figures on provision, providers and use of services, particularly Private versus Local Authority services.
- Analysis on the decrease in playgroups and out of school clubs – what is causing it and can we track it?
- Breakdown of services by postcode area.
- A background dataset containing basic information on all Childcare / Day care of Children services.
- Table 13 is not easy to interpret – look at redesigning it.

Appendix A

Table1. Number of registered childcare services by main service type and service status, 2008-2010

Table2a. Active registered childcare services by main service type and management sector, 2008/2009/2010 (count)

Table2b. Active registered childcare services by main service type and management sector, 2008/2009/2010 (%)

Table3. Number of active registered childcare services by urban-rural, deprivation category and management sector, 2010

Table4. Number of active registered childcare services per 10,000 population, by urban-rural and deprivation category, 2010

Table 5. Number of children attending registered childcare services, by main service type

Table 6. Number of children registered with a childcare service, by main service type

Table 7. Number of capacity places of childcare services, by main service type

Table 8a. children attending childcare services, by main type of service and age-group (count)

Table 8b. children attending childcare services, by main service type and age-group (%)

Table 9a. children registered with childcare services, by main service and age-group (count)

Table 9b. children registered with childcare services, by main service and age-group (%)

Table 10. Number of children attending registered childcare services, by urban-rural, deprivation category and management sector, 2010

Table 11. Average Number of children attending per service, by urban-rural, deprivation category and management sector, 2010

Table 12. children attending childcare services, as a percentage of the population, by urban-rural and deprivation category, 2010

Table 13. Estimated proportions of childcare services that are providing pre-school education, 2008-2010

Table 14a. age-groups that are provided for by registered childminders, 2010

Table 14b. age-groups that are provided for by registered childcare services, 2010

Table 15a. languages delivered and service philosophies used, by service types, 2010 (count of services)

Table 15b. languages delivered and service philosophies used, by service types, 2010 (% of services)

Table 16a. School term & school holiday availability, by main service type, 2010 (count)

Table 16b. School term & school holiday availability, by main service type, 2010 (%)

Table 17a. Part-day / whole-day sessions and whether drop-in or planned, by main service type, 2010 (count)

Table 17b. Part-day / whole-day sessions and whether drop-in or planned, by main service type, 2010 (%)

Table 18a. Provision of meals and snacks, by main service type, 2010 (count)

Table 18b. Provision of meals and snacks, by main service type, 2010 (%)

Table 19. Characteristics of the active child-minder workforce, 2010